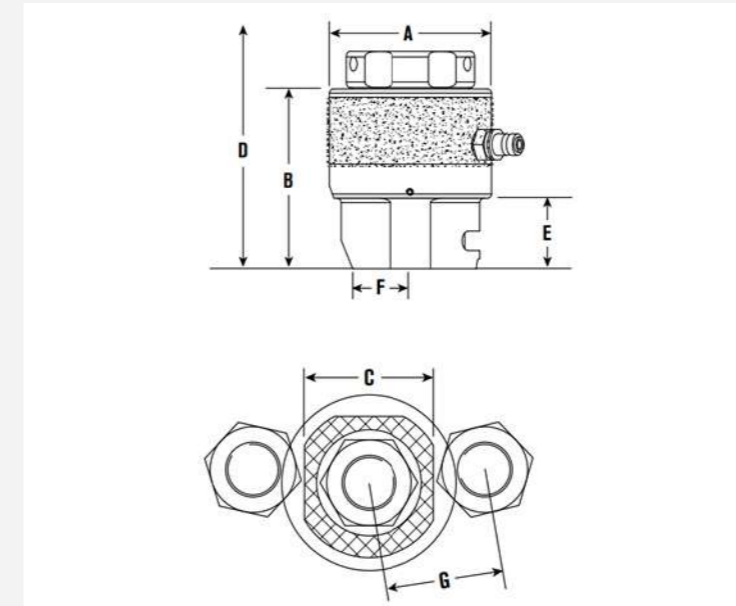


SRT, 1500 bar Spring Return Bolt Tensioners



Product description:

Model: SRT0-SRT8

Load Cell: Spring Return

Piston stroke: 10mm

Bolt coverage: 20-115 mm(3/4"-4")

Max tool pressure: 1500 bar (21750 psi)

Bolt protrusion above nut: minimum 1 x bolt diameter

Tool Load: 160-4100 kN

Bolt Metric: M20 - M115

Hydraulic Area: 1067-27340 mm²

Manufacturer: SAIVS

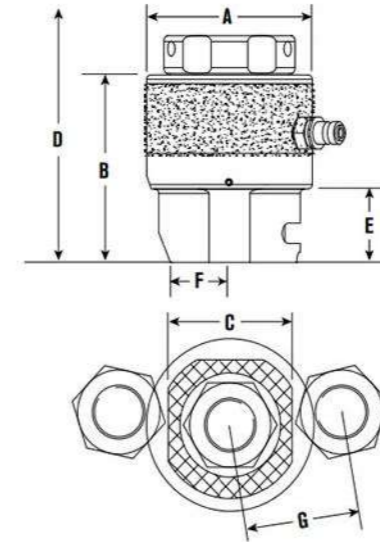
Country of Origin: China

Minimum Order: 1 Piece

The Spring Return design dramatically increases productivity and safety on the job site when compared to older technology Manual Return tensioners.

- Piston overstroke prevention
- Piston stroke indication
- Compatible with MRT Tensioner range
- Unique quick-release bridge adaptation
- Piston/cylinder misalignment compensation

MRT, 1500 bar Manual Return Bolt Tensioners Pump



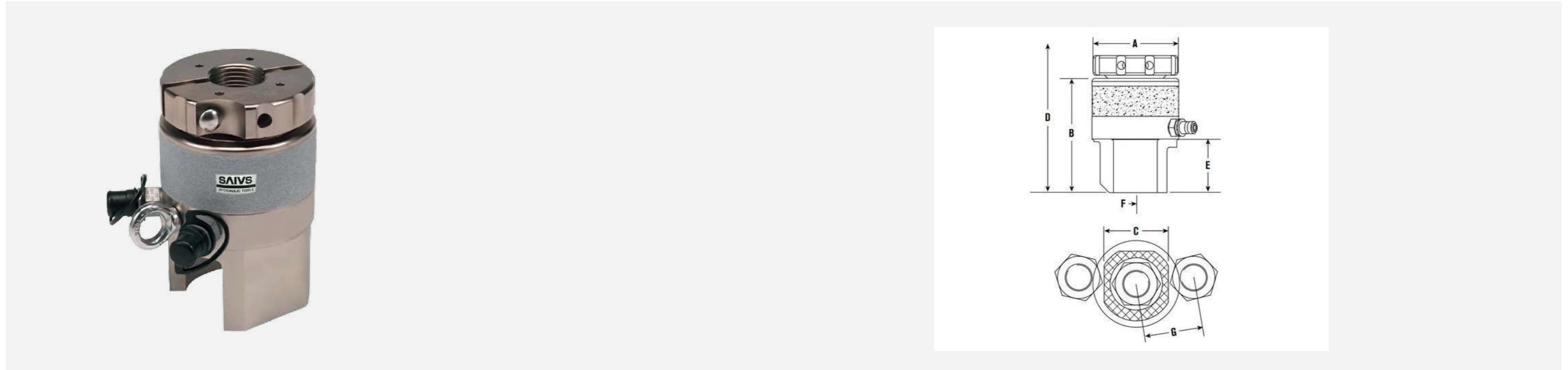
Product description:

Model: MRT1-MRT7
 Load Cell: Manual Return
 Piston stroke: 15mm (excluding MRT1 - 10mm)
 Max tool pressure: 1500 bar (21750 psi)
 Bolt protrusion above nut: 1 x bolt diameter
 Tool Load: 280-3200 kN
 Bolt Metric: M24 - M100
 Hydraulic Area: 1867-21339 mm²
 Manufacturer: SAIVS
 Country of Origin: China
 Minimum Order: 1 Piece

Advantages of Spring Return Design:

Increased Productivity: The spring return design improves efficiency compared to older Manual Return tensioners.
Enhanced Safety: Reduces the risk of operator injury and equipment damage.

SST, 1500 bar Subsea stud Bolt Tensioners



Product description:

Model: SST1-SST8

Piston stroke: 30mm (1.2") except for SST1 - 20mm (0.8")

Bolt coverage: 3/4"-4"

Max tool pressure: 1500 bar (21750 psi)

Ton: 15.7-388

Tool Load: 140-3447 kN

Bolt Metric: M20 - M100

Hydraulic Area: 934-22997 mm²

Manufacturer: SAIVS

Country of Origin: China

Minimum Order: 1 Piece

Our Subsea stud tensioner incorporates the quick reaction nut feature reduces diver fatigue, improving diver safety and productivity.

- Visible piston stroke indication
- Positive 'over-stroke' stop to prevent piston expulsion/seal damage.
- Piston/cylinder misalignment compensation
- Anti-slip cylinder surface for improved handling
- Low friction seals
- Anti-corrosion coating